

# DELANO UNION SCHOOL DISTRICT

## CONDUCT POLICY 2020-2021



**DELANO UNION SCHOOL DISTRICT**  
**Working Together For A Better Education**

*Empowering Students to Succeed*

# *Delano Union School District*

## **Office of Rosalina Rivera, Superintendent**

1405 - 12<sup>th</sup> Avenue  
Delano, California 93215  
Phone (661) 721-5000 x00102  
Fax (661) 725-2201

### **Goal**

The goal of the Delano Union School District is to provide a safe and positive learning environment for all pupils.

When misconduct occurs, staff shall implement appropriate discipline and attempt to identify and address the causes of the pupil's behavior. Continually disruptive pupils may be assigned to alternative programs or removed from school. At all times, the safety of pupils and staff and the maintenance of an orderly school environment shall be priorities in determining appropriate discipline. **Board Policy 5144(a)**

All staff at the Delano Union School District Middle Schools will follow a uniform classroom management process for all pupils. The following Conduct Policy will be in effect for the 2020-2021 school year.

**Please review this plan carefully and discuss it with your child. Sign and return the attached signature page to your child's school as soon as possible.** Should you have any questions regarding the Conduct Policy please contact school site administration listed.



Rosalina Rivera  
Superintendent

### **BOARD OF TRUSTEES**

#### **TRUSTEES**

**Dr. Efraín Rodríguez, President**  
**Suzanne Villaruz Clerk**  
**Ramón Cárdenas, Member**  
**Frank Herrera, Member**  
**Irene Martínez, Member**

### **DISTRICT OFFICE STAFF**

**Rosalina Rivera, Superintendent**  
**Dr. Jason Kashwer, Assistant Superintendent of Human Resources**  
**Tina Tyler Smith, Director of Student Support Services**

*Working Together For A Better Education -- The Delano Way!*  
**AN AFFIRMATIVE ACTION/EQUAL OPPORTUNITY EMPLOYER**

## Conduct Management Process

All staff at the Delano Union School District schools will follow a consistent classroom management process for all the pupils.

- |   |   |
|---|---|
| <ol style="list-style-type: none"> <li>1. <b>Reteach Behavioral Expectations</b></li> <li>2. <b>Behavior Intervention</b></li> <li>3. <b>Teacher/Parent Conference</b></li> <li>4. <b>Behavioral Intervention</b></li> <li>5. <b>Submit Office Discipline Referral (ODR)</b></li> </ol> | <p><b>-Begin Discipline Documentation on Conduct Intervention Log (CIL)</b></p> <p><b>-Parent Notification &amp; Documentation</b></p> <p><b>-Document on Conduct Intervention Log (CIL)</b></p> <p><b>-Document on Conduct Intervention Log (CIL)</b></p> <p><b>-Complete Conduct Intervention Log (CIL) and submit to office. May result in alternative interventions/consequences.</b></p> |
|---|---|

The following minor conduct issues should be addressed in the classroom based on the classroom management procedures **prior** to sending the pupils with an ODR to the office:

<b>RUNNING IN THE ROOM / HALLWAYS</b>	<b>WATER GAMES</b> – Throwing or squirting water on others
<b>LITTERING</b> – Throwing garbage on campus	<b>SAFETY VIOLATION</b> – A behavior that puts others at risk of danger or injury. <ul style="list-style-type: none"> <li>• Minor aggression-(grabbing, pushing, etc.)</li> <li>• Unsafe or rough play</li> </ul>
<b>DRESS CODE VIOLATIONS</b> – Failure to observe the school dress code (refer to dress code policy)	<b>MINOR CLASSROOM DISRUPTIONS</b> – Behavior that is unsuitable or inappropriate in the classroom which includes; horseplay, out of seat, unnecessary laughing and giggling, whistling, noisy; not in assigned place; shouting/calling out; electronic device out/on; inappropriate language; tardy
<b>EATING/ CHEWING GUM IN CLASS</b> – Consumption of candy, gum, breath mints, and/or any food items during school hours	<b>REFUSAL OF AUTHORITY</b> – Refusal to comply with request of school staff; refusal to work; disrespectful (tone/attitude)
<b>MISUSE OF PROPERTY</b> - Throwing objects or damaging items creating a class disruption; disrespect to property; using or possessing permanent markers	<b>CHEATING/LYING</b> – Copying from another / looking at notes. Classwork or homework; false information
<b>TEASING</b> – <i>Name calling</i> or making remarks to or about another person causing them to feel uncomfortable; Invading personal space	<b>BANGING DOORS</b> – Banging on classroom doors while class is in session causing unnecessary interruption

The following accommodations are available for the use by all Delano Union School District teachers to maintain open communication with the parents:

- The administration of Delano Union School District will provide interpreters for teachers when necessary.
- A school phone will be made available to call parents after school hours.

### **Disciplinary Referrals (Major Conduct Violations)**

The following conduct violations will result in an **immediate ODR** to the school administration.

- Abusive / Profane Language
- Theft – Attempting to Steal
- Obscene Act/Materials
- Possession of Stolen Property
- Open Defiance / Disrespect
- Vandalism
- Sexual Harassment
- Defacing or destroying school property (i.e., tagging or graffiti)
- Fighting / Provoking a Fight
- Cigarettes / Tobacco
- Spray Paint / Aerosol / Inhalants
- Tampering with Fire Alarm / Security Alarms
- Ditching School or Class / Truancy
- Severe Unsafe behaviors
- Inappropriate use of the Internet
- Bullying / Threatening
- Bomb Threats
- Forgery
- Cheating (Benchmarks / Classroom Tests)
- Stink Bomb
- Combustible Substances
- Weapons
- Drugs
- Assault
- Firearm
- Robbery
- Explosives
- Dangerous Objects
- Arson
- Threatening School Personnel
- Cigarettes / Tobacco
- Alcohol
- Use of drug paraphernalia (selling/possession)
- Gambling

**Note: Other conduct violations as determined by site administration.**

## Disciplinary Referral Interventions

An ongoing accumulation of disciplinary referrals after appropriate interventions, MAY result in a recommendation for expulsion.

### \* Interventions could include:

- **Parent/Student Conference**
- **Break, Lunch, or After School Reflection/Intervention Table**
- **In-School Intervention ~~Detention~~ for behavior intervention and character development**
- **Mentoring**
- **Academic Behavior Intervention**
- **Referral to school social worker**
- **Referral to SAT (Student Assistant Team)**
- **Saturday School**
- **MTSS (*Multi-Tiered Systems of Supports*) such as, positive attendance recognition, tutoring, counseling, anger management support, drug and alcohol or gang diversion programs, (*requires parental consent*)**
- **Restorative Justice which includes, (conflict resolution skills program, restitution, community service (*may include, but is not limited to, work performed on school grounds during non-school or school hours in the areas of outdoor beautification or campus betterment*))**
- **Referral to the SARB (*School Attendance Review Board*)**
- **Referral to community-based Social Services (medical, family support services, etc.)**
- **Suspension**

**NOTE:** Alternative consequences imposed in lieu of suspension may result in the loss of the same extra-curricular privileges that would have been forfeited if the student had been suspended.

- Law Enforcement may be notified at the discretion of the administration
- If the nature of the offense is serious enough to warrant an alternative education placement or expulsion recommendation, the student may be suspended five (5) days for the infraction.
- Students may be suspended on the first offense for E.C. 48900 (a), (b), (c), (d) or € if it is determined that the pupil's presence causes a danger to persons or property or threatens to disrupt the instructional process. (E.E. 48900.5).

## Disciplinary Intervention Policy

Disciplinary Intervention will be served at break, lunch, and / or after school. Intervention will not exceed 1 hour per day. Pupils that ride the bus will participate in intervention before school, during break, and / or during lunch. Parents will be notified if their child has been assigned to intervention prior to the intervention being served.

Pupils that fail to serve intervention will be subject to other disciplinary actions.

## Discipline Matrix

The following list identifies the sections of the California Education Code that governs pupil conduct and the consequences in the Conduct Code that may be applied. Most violations allow for a range of disciplinary responses. Some consequences may occur simultaneously.

When a pupil violates the Conduct Code, the principal will follow the guidelines related to consequences as outlined in this code. However, in some cases, particular circumstances may make expulsion inappropriate. In those instances, the principal may use his/her discretion and not recommend expulsion. When this option is exercised within five (5) days of the infraction, the principal will request expulsion with the hearing officer, describing the incident, the particular circumstances that make expulsion inappropriate, and the nature of the alternative consequences that will be used to hold the pupil accountable. This applies to all elements of the Conduct Code, except the five (5) mandatory expulsion offenses outlined in Ed. Code 48915, subsection c:

1. Possessing, selling, or furnishing a firearm
2. Brandishing a knife at another person
3. Unlawfully selling a specified controlled substance
4. Committing or attempting to commit sexual assault or committing sexual battery
5. Possession of an explosive

**A conduct violation involving any of these five (5) offenses requires a mandatory expulsion without exception. The following document serves as a conduct guideline for site administrators. When a pupil should be considered for suspension, the principal can use his/her discretion to impose alternative consequences that are comparable in magnitude. These may include community or school service, Saturday School, detention, in-school detention, etc.**

**Law enforcement agencies may be notified at the discretion of the administration.**

Mandatory Expulsion [E.C. 48915(c)]	Alternative to Suspension	Shall Suspend	Shall Expel	Contact Law Enforcement
1. Possession, selling or otherwise furnishing a firearm	No	Yes 5 days	Yes	Yes
2. Brandishing a knife (blade longer than 31/2 inches, fixed/locking blade - Section 48915(g))	No	Yes 5 days	Yes	Yes
3. Unlawfully selling a drug	No	Yes 5 days	Yes	Yes
4. Committing or attempting to commit sexual assault or battery	No	Yes 5 days	Yes	Yes
5. Possession of Explosives	No	Yes 5 days	Yes	Yes
Qualified Mandatory Referral [E.C. 48915(a)]	Alternative to Suspension	Shall Suspend	Shall Expel	Contact Law Enforcement
1. Causing <b>serious</b> physical injury to another person, except in self defense	No	Yes Up to 5 days	Yes	Yes
2. Possession of any knife, explosive, or other dangerous object of no reasonable use to the pupil	No	Yes Up to 5 days	Yes	Yes
3. Unlawful possession of any drug except for the first offense of possession of not more than one ounce of marijuana	No	Yes Up to 5 days	Yes	Yes
4. Robbery or extortion	No	Yes Up to 5 days	Yes	Yes
5. Assault or battery upon a school employee	No	Yes Up to 5 days	Yes	Yes

<b>1. Acts of Violence [E.C. 48900(a)]</b>	<b>Suspension</b>	<b>May Suspend</b>	<b>May Recommend Expulsion</b>	<b>Contact Law Enforcement</b>
a1. Caused, attempted to cause, or threatened to cause physical injury to another person.	<u>MAY</u> be suspended on the first offense	1 <sup>st</sup> : 1-3 days 2 <sup>nd</sup> : 3-5 days 3 <sup>rd</sup> : Up to 5 days	Yes	May
a2. Willfully used force or violence upon another person, except in self-defense.	<u>MAY</u> be suspended on the first offense	1 <sup>st</sup> : 1-3 days 2 <sup>nd</sup> : 3-5 days 3 <sup>rd</sup> : Up to 5 days	Yes	May
<b>2. Weapons and Dangerous Objects [E.C. 48900(b)]</b>	<b>Suspension</b>	<b>May Suspend</b>	<b>May Recommend Expulsion</b>	<b>Contact Law Enforcement</b>
Possession, sale, or furnishing of weapons (knife, gun, sharp object, club, or an object that could inflict injury) or explosive.	<u>MAY</u> be suspended on the first offense	1 <sup>st</sup> : 1-3 days 2 <sup>nd</sup> : 3-5 days 3 <sup>rd</sup> : Up to 5 days	Yes	May
<b>3. Drugs and Alcohol [E.C. 48900(c)]</b>	<b>Suspension</b>	<b>May Suspend</b>	<b>May Recommend Expulsion</b>	<b>Contact Law Enforcement</b>
Possession, use, sale or otherwise furnishing, or being under the influence of alcohol or drugs.	<u>MAY</u> be suspended on the first offense	1 <sup>st</sup> : 1-3 days 2 <sup>nd</sup> : 3-5 days 3 <sup>rd</sup> : Up to 5 days	Yes	May
<b>4. Sale of "look-alike" Drugs and Alcohol [E.C. 48900(d)]</b>	<b>Suspension</b>	<b>May Suspend</b>	<b>May Recommend Expulsion</b>	<b>Contact Law Enforcement</b>
Offering, arranging, or negotiating to sell drugs, alcohol, or any intoxicant and then substituting a look-alike substance intended to represent drugs, alcohol, or an intoxicant.	<u>MAY</u> be suspended on the first offense	1 <sup>st</sup> : 2-5 days 2 <sup>nd</sup> : 3-5 days 3 <sup>rd</sup> : Up to 5 days	Yes	May
<b>5. Robbery or Extortion [E.C. 48900(e)]</b>	<b>Suspension</b>	<b>May Suspend</b>	<b>May Recommend Expulsion</b>	<b>Contact Law Enforcement</b>
Committed or attempted to commit robbery or extortion.	<u>MAY</u> be suspended on the first offense	1 <sup>st</sup> : 1-3 days 2 <sup>nd</sup> : 3-5 days 3 <sup>rd</sup> : Up to 5 days	Yes	May
<b>6. Damage of Property [E.C. 48900(f)]</b>	<b>Suspension</b>	<b>May Suspend</b>	<b>May Recommend Expulsion</b>	<b>Contact Law Enforcement</b>
Cause or attempt to cause damage to school or private property including electronic files and databases.	<u>MAY</u> be suspended on the first offense	1 <sup>st</sup> : 1 – 3 days 2 <sup>nd</sup> : 3-5 days 3 <sup>rd</sup> : Up to 5 days	Yes	May
<b>7. Theft or Stealing [E.C. 48900(g)]</b>	<b>Suspension</b>	<b>May Suspend</b>	<b>May Recommend Expulsion</b>	<b>Contact Law Enforcement</b>
Stealing or attempting to steal school or private property including electronic files and databases.	May be considered after appropriate interventions	1 <sup>st</sup> : 1-3 days 2 <sup>nd</sup> : 3-5 days 3 <sup>rd</sup> : Up to 5 days	Yes	May

<b>8. Tobacco [E.C. 48900(h)]</b>	<b>Suspension</b>	<b>May Suspend</b>	<b>May Recommend Expulsion</b>	<b>Contact Law Enforcement</b>
Possession or use of tobacco or nicotine products.	May be considered after appropriate interventions	1 <sup>st</sup> : 1-3 days 2 <sup>nd</sup> : 3-5 days 3 <sup>rd</sup> : Up to 5 days	Yes	May
<b>9. Profanity, Obscene Acts, Vulgarity [E.C. 48900(i)]</b>	<b>Suspension</b>	<b>May Suspend</b>	<b>May Recommend Expulsion</b>	<b>Contact Law Enforcement</b>
1. Directed at peers.	May be considered after appropriate interventions	1 <sup>st</sup> : Alternative Consequences 2 <sup>nd</sup> : 1-3 days 3 <sup>rd</sup> : Up to 5 days	Yes	May
2. Directed at school personnel.	May be considered after appropriate interventions	1 <sup>st</sup> : Alternative Consequences 2 <sup>nd</sup> : 1-3 days 3 <sup>rd</sup> : Up to 5 days	Yes	May
<b>10. Drug Paraphernalia [E.C. 48900(j)]</b>	<b>Suspension</b>	<b>May Suspend</b>	<b>May Recommend Expulsion</b>	<b>Contact Law Enforcement</b>
Possessed, offered, arranged, or negotiated to sell any drug paraphernalia.	<u>MAY</u> be suspended on the first offense	1 <sup>st</sup> : 1-3 days 2 <sup>nd</sup> : 3-5 days 3 <sup>rd</sup> : Up to 5 days	Yes	May
<b>11. Willful Defiance or Disruption of School Activities [E.C. 48900(k)]</b>	<b>Alternative to Suspension</b>	<b>May Not Suspend (Only after Appropriate Interventions) for the same offense</b>	<b>May Recommend Expulsion</b>	<b>Contact Law Enforcement</b>
1. Failure to follow school rules.	Appropriate Intervention		No	No
2. Failure to follow directive or instruction of staff or teachers.	Appropriate Intervention		No	No
<b>12. Possession of Stolen Property [E.C. 48900(l)]</b>	<b>Suspension</b>	<b>May Suspend</b>	<b>May Recommend Expulsion</b>	<b>Contact Law Enforcement</b>
Knowingly receive stolen school property or private property.	May be considered after appropriate interventions	1 <sup>st</sup> : 1-3 days 2 <sup>nd</sup> : 3-5 days 3 <sup>rd</sup> : Up to 5 days	Yes	May
<b>13. Imitation Firearm [E.C. 48900(m)]</b>	<b>Suspension</b>	<b>May Suspend</b>	<b>May Recommend Expulsion</b>	<b>Contact Law Enforcement</b>
Possession of an imitation firearm that is so substantially similar in physical properties to an existing firearm as to lead a reasonable person to conclude the replica is a firearm.	May be considered after appropriate interventions	1 <sup>st</sup> : 1-3 days 2 <sup>nd</sup> : 3-5 days 3 <sup>rd</sup> : Up to 5 days	Yes	May
<b>14. Sexual Assault or Sexual Battery</b>	<b>Suspension</b>	<b>May Suspend</b>	<b>May Recommend</b>	<b>Contact Law</b>



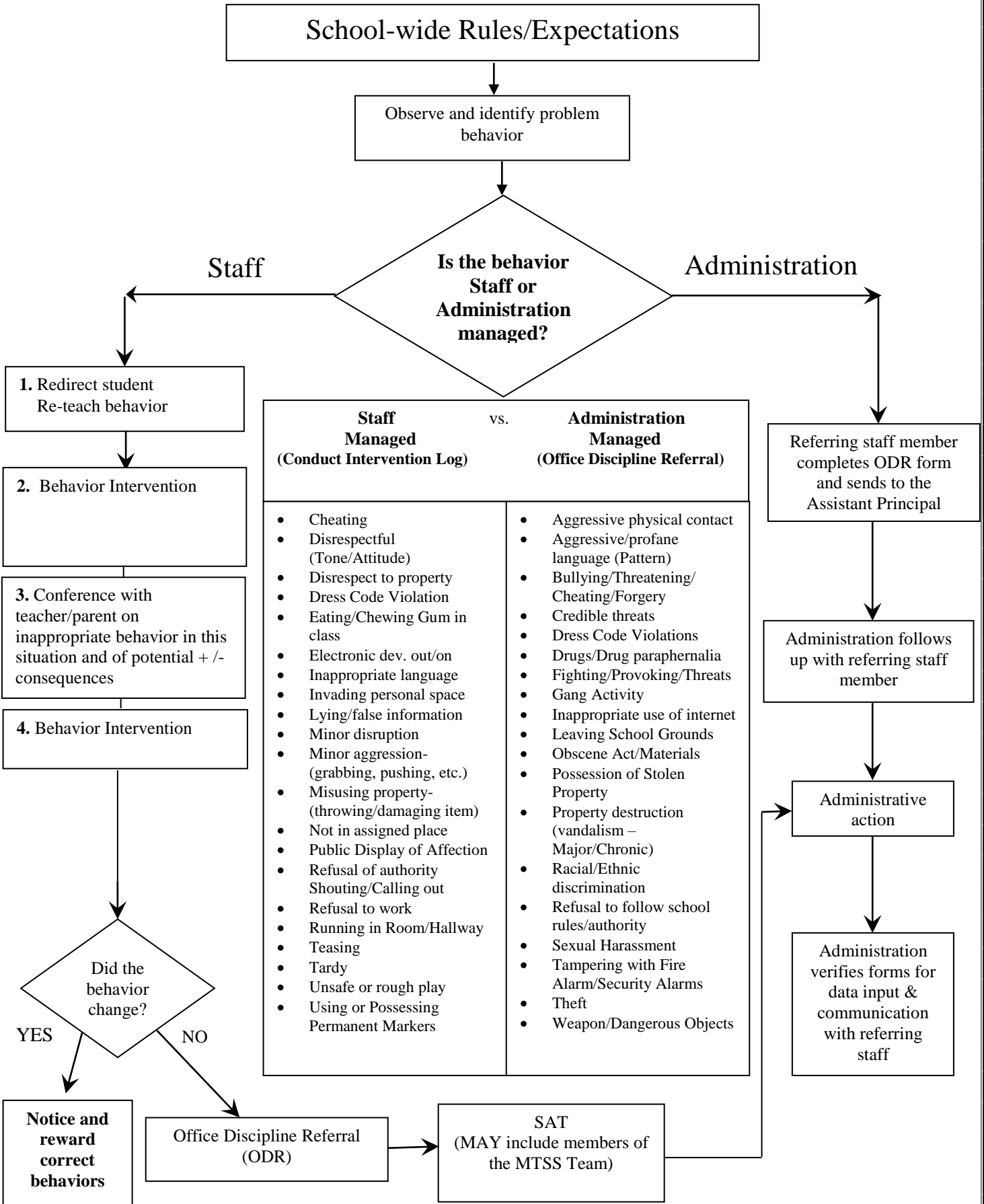
<b>[E.C. 48900(n)]</b>			<b>Expulsion</b>	<b>Enforcement</b>
Committed or attempted to commit sexual assault or battery.	May be considered after appropriate interventions	1 <sup>st</sup> : 1-5 days and recommendation for expulsion	Yes	May
<b>15. Harassment of a Pupil Witness [E.C. 48900(o)]</b>	<b>Suspension</b>	<b>May Suspend</b>	<b>May Recommend Expulsion</b>	<b>Contact Law Enforcement</b>
Harassed, threatened, or intimidated a pupil who is a complaining witness or witness in a school disciplinary proceeding for the purpose of preventing that pupil from being a witness and/or retaliating against that pupil for being a witness.	May be considered after appropriate interventions	1 <sup>st</sup> : 1-3 days 2 <sup>nd</sup> : 3-5 days 3 <sup>rd</sup> : Up to 5 days	Yes	May
<b>16. Unlawful Drug Soma [E.C. 48900(p)]</b>	<b>Suspension</b>	<b>May Suspend</b>	<b>May Recommend Expulsion</b>	<b>Contact Law Enforcement</b>
Offered, arranged to sell, negotiated to sell or sold the prescription drug Soma.	May be considered after appropriate interventions	1 <sup>st</sup> : 1-3 days 2 <sup>nd</sup> : 3-5 days 3 <sup>rd</sup> : Up to 5 days	Yes	May
<b>17. Hazing [E.C. 48900(q)]</b>	<b>Suspension</b>	<b>May Suspend</b>	<b>May Recommend Expulsion</b>	<b>Contact Law Enforcement</b>
Engaged in or attempted to engage in hazing.	May be considered after appropriate interventions	1 <sup>st</sup> : 1-3 days 2 <sup>nd</sup> : 3-5 days 3 <sup>rd</sup> : Up to 5 days	Yes	May
<b>18. Bullying [E.C. 48900(r)]</b>	<b>Suspension</b>	<b>May Suspend</b>	<b>May Recommend Expulsion</b>	<b>Contact Law Enforcement</b>
Engaged in an act of bullying, including, but not limited to, bullying committed by means of an electronic act directed specifically toward a pupil or school personnel.	May be considered after appropriate interventions	1 <sup>st</sup> : 1-3 days 2 <sup>nd</sup> : 3-5 days 3 <sup>rd</sup> : Up to 5 days	Yes	May
<b>19. Aids or Abets [E.C. 48900(t)]</b>	<b>Suspension</b>	<b>May Suspend</b>	<b>May Recommend Expulsion</b>	<b>Contact Law Enforcement</b>
The infliction or attempted infliction of physical injury to another person.	May be considered after appropriate interventions	1 <sup>st</sup> : 1-3 days 2 <sup>nd</sup> : 3-5 days 3 <sup>rd</sup> : Up to 5 days	No, unless judged by a juvenile court to have acted as an aider or abettor causing serious injury. Expulsion would move forward under E.C. 48900 a1 or a2.	May
<b>20. Sexual Harassment [E.C. 48900.2]</b>	<b>Suspension</b>	<b>May Suspend</b>	<b>May Recommend Expulsion</b>	<b>Contact Law Enforcement</b>

Prohibited sexual harassment includes, but is not limited to, unwelcome sexual advances, requests for sexual favors, and other verbal, visual, or physical conduct of a sexual nature. Applies to grades 4-12.	May be considered after appropriate interventions	1 <sup>st</sup> : 1-3 days 2 <sup>nd</sup> : 3-5 days 3 <sup>rd</sup> : Up to 5 days	Yes	May
<b>21. Acts of Hate Violence [E.C. 48900.3]</b>	<b>Suspension</b>	<b>May Suspend</b>	<b>May Recommend Expulsion</b>	<b>Contact Law Enforcement</b>
Cause, threaten, attempt to cause, or participate in an act of hate violence defined as willfully interfering with or threatening another person's personal or property rights because of race, ethnicity, national origin, disability or sexual orientation. Speech that threatens violence when the perpetrator has the apparent ability to carry out the threat may be considered an act of hate violence. Applies to grades 4-12.	May be considered after appropriate interventions	1 <sup>st</sup> : 1-3 days 2 <sup>nd</sup> : 3-5 days 3 <sup>rd</sup> : Up to 5 days	Yes	May
<b>22. Other Harassment [E.C. 48900.4]</b>	<b>Suspension</b>	<b>May Suspend</b>	<b>May Recommend Expulsion</b>	<b>Contact Law Enforcement</b>
Intentionally engaged in harassment, threats, or intimidation against pupils or school personnel that is sufficiently severe or pervasive to have the actual and reasonably expected effect of materially disrupting classwork, creating substantial disorder, and invading the rights of school personnel or pupils by creating an intimidating or hostile educational environment. Applies to grades 4-12.	May be considered after appropriate interventions	1 <sup>st</sup> : 1-3 days 2 <sup>nd</sup> : 3-5 days 3 <sup>rd</sup> : Up to 5 days	Yes	May
<b>23. Terrorist Threats [E.C. 48900.7]</b>	<b>Suspension</b>	<b>May Suspend</b>	<b>May Recommend Expulsion</b>	<b>Contact Law Enforcement</b>
Making terrorist threats against school officials and/or school property.	May be considered after appropriate interventions	1 <sup>st</sup> : 1-5 days and recommendation for expulsion	Yes	May
<b>24. Attendance</b>	<b>Suspension</b>	<b>May Suspend</b>	<b>May Recommend Expulsion</b>	<b>Contact Law Enforcement</b>
1. Truant [E.C. 48260] (Warning letter #1). Absent from school without a valid excuse.	No	No	No	May
2. Repeat truant [E.C. 48261] (Warning letter #2).	No	No	No	May
3. Habitual truant [E.C. 48262]	No	No	No	May

(Warning letter #3). Any pupil truant three or more times per school year. Pupils who are habitually truant may be referred to the School Attendance Review Board (SARB) for further action.				
--	--	--	--	--

**Note: The site administrator may use alternative consequences depending upon the severity of the infraction.**

# DUSD School-Wide Discipline Flow Chart



# Delano Union School District

## PARENT CONTACT LETTER

Teacher's Name/*Nombre de Maestro(a)*: \_\_\_\_\_

School/*Escuela*: \_\_\_\_\_

Parents of/*Padres de*: \_\_\_\_\_ Date/*Fecha*: \_\_\_\_\_

I am writing to inform you that \_\_\_\_\_ is having some behavioral problems. I would greatly appreciate your cooperation in working with me to resolve these issues.

*Le escribo para informarle que \_\_\_\_\_ está teniendo algunos problemas de comportamiento. Le agradecería su cooperación en trabajar conmigo para resolver estos problemas.*

In order to keep the class productive and calm, it is essential that each child in my classroom avoid certain behaviors. I've marked the problem areas below. \_\_\_\_\_ must improve in these areas to develop his/her full potential.

*Para mantener la clase productiva y tranquila, es esencial que cada niño en mi salón de clases evite ciertos comportamientos. He marcado el problema abajo. \_\_\_\_\_ debe mejorar en estas áreas para desarrollar su máximo potencial.*

Excessive talking / *Hablar en exceso*

Lack of effort / *Falta de esfuerzo*

Lack of attention / *Falta de atención*

Disrespectfulness to others / *Irrespetuoso hacia los demás*

Incomplete or late assignments / *Trabajo incompleto o tarde*

Missing assignments / *Trabajo no ha sido entregado*

Poor test scores / *Resultados bajos de exámenes*

Excessive detentions / *Detenciones excesivas*

Parent Conference Requested / *Conferencia de Padres solicitada*

Other / *Otro* \_\_\_\_\_

I would like your help in putting an end to these problems and how we can help \_\_\_\_\_ resolve them. **Please call** \_\_\_\_\_

*Quisiera su ayuda para poner fin a estos problemas y cómo podemos ayudar a \_\_\_\_\_ a resolverlos. **Por favor llame a** \_\_\_\_\_*

Sincerely/*Atentamente*,

\_\_\_\_\_  
**(Teacher/Maestro(a))**

**Comments/Comentarios:** \_\_\_\_\_

\_\_\_\_\_

Copy to Office (White)

Copy to Teacher (Yellow)

Copy to Parent Pink

**DELANO UNION SCHOOL DISTRICT**  
**Elementary/Middle School Conduct Intervention Log**

<b>Student Name</b>	<b>I.D. Number</b>	<b>Grade Level</b>
<b>Teacher Name</b>	<b>Classroom</b>	<b>Trimester</b>

**IMMEDIATE REFERRAL MAY OCCUR FOLLOWING SEVERE INCIDENT(S) OF MISCONDUCT**

X	Infraction Type	Reteach Expectations	Behavior Intervention(s)	Parent Contact/type	Behavior Intervention(s)	ODR
		Date/Time	Date/Time	Date/Time	Date/Time	Date/Time
	<b>Danger to Self or Others</b>	/	/	/	/	/
	DESCRIPTIVE INFO HERE	DESCRIPTIVE INFO HERE	DESCRIPTIVE INFO HERE	DESCRIPTIVE INFO HERE	DESCRIPTIVE INFO HERE	DESCRIPTIVE INFO HERE
	<b>Defiance/Insubordination</b>	/	/	/	/	/
	<b>Classroom Disruption</b>	/	/	/	/	/
	<b>Other Infraction(s)</b>	/	/	/	/	/

**SUMMARY OF INTERVENTIONS**

Intervention strategies used prior to Office Discipline Referral	Parent contacts prior to Office Discipline Referral

*Discipline is Documented Electronically*

*Copy to Parent Upon Request*

**Delano Union School District**  
**Middle School**

**Conduct Monitoring Procedures**

Student Name/*Nombre de Alumno* \_\_\_\_\_ Date/*Fecha* \_\_\_\_\_

Period / <i>Período</i>	Class work completed? <i>¿Trabajo de clase terminado?</i>	Homework completed? <i>¿Tarea completada?</i>	Homework assignments: <i>Tarea(s) asignadas</i>	Behavior <b>*5 Being Great</b> <i>Comportamiento</i> <b>*5 Siendo el mejor</b>	Teacher's Initials/ <i>Iniciales del Maestro/a</i>
<b>1</b>	Yes No	Yes No		<b>1 2 3 4 5*</b> <b>*5 Being Great</b>	
<b>2</b>	Yes No	Yes No		<b>1 2 3 4 5*</b> <b>*5 Being Great</b>	
<b>3</b>	Yes No	Yes No		<b>1 2 3 4 5*</b> <b>*5 Being Great</b>	
<b>4</b>	Yes No	Yes No		<b>1 2 3 4 5*</b> <b>*5 Being Great</b>	
<b>5</b>	Yes No	Yes No		<b>1 2 3 4 5*</b> <b>*5 Being Great</b>	
<b>6</b>	Yes No	Yes No		<b>1 2 3 4 5*</b> <b>*5 Being Great</b>	
After School Tutoring/ <i>Tutoría después de clases</i>		Subject/ <i>Materia</i>		<b>1 2 3 4 5*</b> <b>*5 Being Great</b>	

All daily assignments are to be listed above / *Todas las tareas diarias deben ser anotadas arriba.*  
 All class work must be completed on time / *Todo el trabajo de clase debe ser completado a tiempo.*  
 All homework must be completed on time / *Toda la tarea debe ser completada a tiempo.*  
 Any work turned in late should be noted below / *Todo trabajo entregado tarde debe ser anotado abajo.*

Comments: \_\_\_\_\_  
 \_\_\_\_\_  
 \_\_\_\_\_  
 \_\_\_\_\_

\_\_\_\_\_  
 Parent Signature/Firma De Padre/Tutor

\_\_\_\_\_  
 Reviewed by/Revisado por

**Delano Union School District**  
**Elementary**  
**Conduct Monitoring Procedures**

Name: \_\_\_\_\_ Week of: \_\_\_\_\_ Teacher: \_\_\_\_\_

**Monday**

	Period	Recess earned?	Initials/Comment
1	8:00 to recess	Yes <input type="checkbox"/> No <input type="checkbox"/>	
2	Recess to Lunch	Yes <input type="checkbox"/> No <input type="checkbox"/>	
3	After Lunch to the end of day	Yes <input type="checkbox"/> No <input type="checkbox"/>	ASP - Yes <input type="checkbox"/> No <input type="checkbox"/>

**Tuesday**

	Period	Recess earned?	Initials/Comment
1	8:00 to recess	Yes <input type="checkbox"/> No <input type="checkbox"/>	
2	Recess to Lunch	Yes <input type="checkbox"/> No <input type="checkbox"/>	
3	After Lunch to the end of day	Yes <input type="checkbox"/> No <input type="checkbox"/>	ASP - Yes <input type="checkbox"/> No <input type="checkbox"/>

**Wednesday**

	Period	Recess earned?	Initials/Comment
1	8:00 to recess	Yes <input type="checkbox"/> No <input type="checkbox"/>	
2	Recess to Lunch	Yes <input type="checkbox"/> No <input type="checkbox"/>	
3	After Lunch to the end of day	Yes <input type="checkbox"/> No <input type="checkbox"/>	ASP - Yes <input type="checkbox"/> No <input type="checkbox"/>

**Thursday**

	Period	Recess earned?	Initials/Comment
1	8:00 to recess	Yes <input type="checkbox"/> No <input type="checkbox"/>	
2	Recess to Lunch	Yes <input type="checkbox"/> No <input type="checkbox"/>	
3	After Lunch to the end of day	Yes <input type="checkbox"/> No <input type="checkbox"/>	

**Friday**

	Period	Recess earned?	Initials/Comment
1	8:00 to recess	Yes <input type="checkbox"/> No <input type="checkbox"/>	
2	Recess to Lunch	Yes <input type="checkbox"/> No <input type="checkbox"/>	
3	After Lunch to the end of day	Yes <input type="checkbox"/> No <input type="checkbox"/>	

The area/s of focus will be: **FOLLOWING DIRECTIONS, HOMEWORK, FOLLOWING SCHOOL RULES, FOCUSING**, and \_\_\_\_\_.

The classroom teacher will mark a “yes” if pupil adheres to the above area of focus during each period of the day. If not, a “no” will be marked and the pupil will report to intervention for recess or quiet table in the cafeteria. For the third period, the pupil should be given the opportunity to earn a reward or privilege for adhering to the contract. *Anytime a pupil receives a “NO,” s/he must bring contract folder with her or him to the cafeteria at recess, the quiet table at lunch, or intervention after school as well as any missing or incomplete work or a book.*

**8:00 - Recess:** if pupil gets a “no” - No a.m. recess, report to Intervention area.

**Recess – Lunch:** If pupil gets a “no”- No a.m. recess, report to Intervention area.

**Lunch – Dismissal:** If pupil gets a “no” - Pupil reports to After School Intervention teacher or to the office first thing the next morning (if applicable).

**ASP (After School Programs):** If a pupil gets a “no” - Reports to office first thing in the a.m.

**The pupil must take a copy home for a parent/guardian signature on Friday and return it on Monday.**

Parent/Guardian Signature \_\_\_\_\_



**DELANO UNION SCHOOL DISTRICT  
OFFICE DISCIPLINE REFERRAL FORM (ODR)**

Referral #  
Office Use Only

<b>STUDENT</b> Last Name, First Name	<b>GRADE:</b> Select Grade	<b>Staff:</b>	<b>Date:</b>	<b>Time:</b> Select one
---	-------------------------------	---------------	--------------	----------------------------

**Location**

<input type="checkbox"/> Classroom	<input type="checkbox"/> Cafeteria	<input type="checkbox"/> Restroom	<input type="checkbox"/> Library
<input type="checkbox"/> Hallway	<input type="checkbox"/> Bus/Loading Zone	<input type="checkbox"/> Quad/Patio	<input type="checkbox"/> Special Event/Field Trip
<input type="checkbox"/> Playground/Yard	<input type="checkbox"/> Gym	<input type="checkbox"/> Computer Lab	<input type="checkbox"/> Other

**PROBLEM BEHAVIORS: Select only the most intrusive behavior (check only one)**

<input type="checkbox"/> Caused/Threatened Physical Injury (a1)	<input type="checkbox"/> Paraphernalia (j)
<input type="checkbox"/> Willful use of force or violence on another (a2)	<input type="checkbox"/> Disruption/Defiance (k) <i>(Must have appropriate interventions noted)</i> Select One
<input type="checkbox"/> Weapons/Dangerous Objects (b)	<input type="checkbox"/> Receiving stolen property (l)
<input type="checkbox"/> Drugs/Alcohol possession (c)	<input type="checkbox"/> Imitation Firearm (m)
<input type="checkbox"/> Negotiate sale/furnished unlawful substance (d)	<input type="checkbox"/> Sexual assault / battery (n)
<input type="checkbox"/> Robbery/Extortion (e)	<input type="checkbox"/> Harassment/Intimidation (o) Select One
<input type="checkbox"/> Vandalism/Damage (f) <input type="checkbox"/> Arson	<input type="checkbox"/> Bullying (r)
<input type="checkbox"/> Theft (g)	<input type="checkbox"/> Other:
<input type="checkbox"/> Tobacco (h)	
<input type="checkbox"/> Profanity/vulgarity (i)	

**Comments:**

<b>Possible Motivation</b> Select One	<b>Others Involved</b> Select One	<input type="checkbox"/> Special Ed (IEP/504) <input type="checkbox"/> Yes <input type="checkbox"/> No <input type="checkbox"/> Academic Support <input type="checkbox"/> Behavior Goal
--	--------------------------------------	---

**TEACHER SIGNATURE: (type name)**

**ADMINISTRATIVE DISCIPLINE ACTION(S) TAKEN**

<input type="checkbox"/> Time out/detention	<input type="checkbox"/> Time in office	<input type="checkbox"/> Law Enforcement Contact	<input type="checkbox"/> In-School Suspension Days
<input type="checkbox"/> Conference with student	<input type="checkbox"/> Individual instruction	<input type="checkbox"/> Restitution	<input type="checkbox"/> Out-of-school Suspension Days
<input type="checkbox"/> Parent Contact	<input type="checkbox"/> Saturday School Date:	<input type="checkbox"/> Community Service	<input type="checkbox"/> Expulsion Recommended
<input type="checkbox"/> Loss of Privileges <input type="checkbox"/> Behavior Contract Start:            End:	<input type="checkbox"/> Action Pending	<input type="checkbox"/> Other	<input type="checkbox"/> Alternative Placement

**Comments:**

<b>Administrator Signature</b>	<b>Parent Signature</b>
--------------------------------	-------------------------

<b>Entered into Aeries</b>	<b>Parent contacted @            by</b>
----------------------------	---

<input type="checkbox"/> Spoke with parent <input type="checkbox"/> Voice message <input type="checkbox"/> Message with family member <input type="checkbox"/> No answer/referral mailed
---

## **Fighting on Campus / Fighting off Campus**

Delano Union School District emphasizes a safe and protected environment – free from threatening and aggressive behavior. School administrators will take disciplinary action with situations that arise when pupils are walking to and from the school. Pupils that engage in fights either on or off campus will receive the following consequences:

### **First Offense:**

The pupil will receive a 1 to 3-day suspension. The Loss of Privilege Program will be enforced. Conflict Resolution session required.

### **Second Offense:**

The pupil will receive a 3 to 5-day suspension. The Loss of Privilege Program will be enforced. Referral to the Delano Police Department, parent conference, Conflict Resolution session required with students involved in the conflict, and a Peace Agreement signed by students and Administration.

### **Third Offense:**

The pupil will receive up 1 to 5-day suspension. Other options that will be considered:

1. Referral to Delano Police Department.
2. Recommendation for Expulsion Hearing.

## **Suspension**

The following policies will be in effect for all pupils who are suspended from the Delano Union School District.

1. For each day of suspension, the pupil will not be allowed to participate in any extra-curricular activity.
2. For each day of suspension, the pupil will be required to stay at home during the time the school day is in session.
3. The parent will be notified either by mail or by phone of the suspension. A conference will be requested by the administrator or suspending teacher.

## Grounds for Suspension

The California Education Code, section 48900 indicates that a pupil may be suspended from school for the following reasons:

- Physical injury/violence (a1, a2)
- Possession, selling, and/or furnishing a firearm, knife, explosives, or other dangerous objects (b)
- Under the influence of a controlled substance (c) (d)
- Robbery or Extortion (e)
- Vandalism (School or Personal) (f)
- Stealing or attempted to steal (g)
- Tobacco (h)
- Obscene act, habitual profanity (i)
- Drug paraphernalia (Selling or Possession) (j)
- Disrupting school activities (k) – After Appropriate Interventions for the same offense
- Receiving stolen property (l)
- Possession of imitation firearm (m)
- Sexual harassment (n) (.2)
- Harassment, Threatening, or Intimidation (o) (.4)
- Possession of Soma (p)
- Hazing (q)
- Bullying (r)
- Aiding or Abetting (t)
- Hate crimes (.3)
- Harassment (.4)
- Terrorist Threats (.7)

Sexual Harassment, Hate-motivated behavior, and Gang-related behavior are violations for which a pupil may be subject to suspension or expulsion.

- A. **Gang-related offenses** – a pupil may be suspended for five (5) days on the first offense and recommended for an alternative education placement or expulsion.

Gang definition – gangs are best described as a group of individuals involved in unusually close social relationships which promote negative behavior. They share a common collective identity expressed through a gang name. Gangs adopt certain symbols or signs and claim control over a certain turf or territory. These organized groups can create fear among other pupils and increase the level of violence in schools. Gangs solidify through participation in group and individual activities that are often antisocial.

B. Sexual Harassment

1. A safe school environment is free of sexual harassment as defined by Section 212.5 of the California Education Code.

## **Saturday School**

Delano Union School District operates a “Saturday School” (middle schools) and a “Camp Success” (elementary schools) on selected Saturdays as an intervention/disciplinary measure for pupils, and an opportunity for chronic/habitual truant pupils to recover learning time. Saturday School and Camp Success sessions are held at school sites on selected Saturdays from 8:00 a.m. to 12:00 p.m. Parents will be required to transport their child to and from Saturday School and Camp Success. If your child is assigned to Saturday School or Camp Success but does not attend, he / she may be assigned four hours of detention by the site administration.

## **Cell Phones and/or Electronic Devices**

As defined in Board Policy 5131, the guidelines for using an electronic signaling device, pager, beeper, and cellular/digital telephone are as follows:

Except for prior consent for health reasons, possession or use of personal electronic signaling devices, including but not limited to pagers, beepers, and cellular/digital telephones shall be approved by the site administrator.

Permitted devices shall:

1. Be turned off during class time, school related activities/events, athletic competitions, and at any other time directed by a district employee.
2. Not disrupt the educational program or school activity.

If a disruption occurs, the employee shall direct the pupil to turn off the device and/or confiscate it. A pupil who violates this policy may be prohibited from possessing a personal electronic signaling device at school, during school-related events, and athletic competitions.

**The Delano Union School District shall NOT be responsible for any lost or stolen cell phones and/or electronic devices.**

## **EXTRA-CURRICULAR ACTIVITIES ELIGIBILITY** **KINDERGARTEN TO EIGHTH GRADE**

**Extra-curricular activities are a privilege and are encouraged by the District. The primary purpose of extra-curricular activities is to provide a variety of experiences appropriate to pupils.**

### **EXTRA-CURRICULAR ACTIVITIES OFFERED THROUGH** **DELANO UNION SCHOOL DISTRICT**

It is the goal of the District to work with parents to assist pupils in becoming self-directed and responsible for their own behavior.

When pupils do not meet the clearly defined and communicated expectations outlined, the pupil MAY not be allowed to participate in extra-curricular activities which include but are not limited to:

1. After school recreation/athletics (practices, games, and tournaments)
2. School assemblies/performances\*
3. Pupil clubs/activities
4. Pupil government activities
5. Cheerleaders/Spirit Leaders activities
6. Other special after school activities
7. Special field trips not a part of regular classroom work\*\* (This included 8<sup>th</sup> grade graduation trip)
8. School dances (This includes 8<sup>th</sup> grade graduation dance and all school dances)
9. Extra-curricular public performances of music, dance, drama, and speech (the loss of these privileges shall not apply to class activities to publicize and/or promote school activities to feeder schools which are conducted during the school day)

NOTES:      \*1. The principal/designee may make exceptions regarding participation in specific activities if the activity/event supports positive behavior intervention.

Pupils need to be present on the day of the activity unless prior approval is granted by the site administrator.

## **EXTRA-CURRICULAR ACTIVITY ELIGIBILITY**

### **1. ACADEMIC**

In order for a pupil to participate in extra-curricular activities, the pupil shall achieve a grade average of 2.00 with no "F's" and show maintenance of minimal progress towards meeting the middle school graduation requirements prescribed by the Governing Board in each grading period preceding the period of participation in the extra-curricular activities.

The six-week academic progress report and report card will be utilized to determine a pupil's eligibility status for continued participation in extra-curricular activities. At the end of the first two weeks, those pupils who do not meet the academic requirements will be identified. The pupils will have the next two weeks as a probationary period allowing them to bring up their grades for continued participation. If a pupil is unsuccessful in improving his/her grades to the required standard (2.00 GPA with no "F's"), the pupils will not be eligible to participate until he/she meets the academic standards at the next grade reporting period.

The eligibility grading periods shall be the three grading sessions.

The grading periods shall be considered consecutive and uninterrupted. Therefore, the third grading period of the previous year shall be the basis for determining the first quarter eligibility for the following year.

If a sixth or seventh grade pupil, during the third grading session, fails to achieve a GPA of 2.0 with no "F's", that pupil would only participate in extra-curricular activities while under probationary status for the first six weeks during the following year.

### **2. BEHAVIOR**

Pupils who are suspended for infractions listed in the Conduct Policy may also be suspended from participation in extra-curricular activities upon the day they return to school consistent with the following proportions:

- 1-day school suspension = 1-week suspension from extra-curricular activity
- 2-day school suspension = 1-week suspension from extra-curricular activity
- 3-day school suspension = 2 weeks' suspension from extra-curricular activity
- 4-day school suspension = 2 weeks' suspension from extra-curricular activity
- 5-day school suspension = 2 weeks' suspension from extra-curricular activity

Notices:

1. Pupils who are suspended, during the final 20 days of school may be denied the privilege of participating in the 8<sup>th</sup> grade graduation ceremony.
2. Pupils who have been placed on a suspended expulsion shall not participate in extra-curricular activities for the length of the suspended expulsion.

# **GUIDE TO STUDENTS' RESPONSIBILITIES WHILE RIDING SCHOOL BUSES**

The following list of student actions constitutes violations of the established rules and regulations:

## **Transportation Safety**

- Putting any part of the body out of the bus window
- Any movement out of seats while bus is in motion
- Unauthorized opening, closing, or tampering of any kind with bus doors and emergency exits
- Any type of damage or defacing of the bus
- Bringing combustibles onto the bus
- Throwing any objects in, out of, or at the bus
- Transporting live animals, reptiles, or insects on the bus (science specimens are to be encased in safe containers of plastic or cardboard; glass containers will not be allowed on the bus)
- Eating, drinking, or chewing gum on the bus
- Using other than the student's regularly designated bus stop without proper authorization
- Tampering with the radio or bus controls

## **Driver / Rider Safety**

- Abusive body contact when loading, unloading or riding the bus
- Using profane language, obscene gestures or gang signs
- Creating excessive noise that distracts the bus driver
- Failure to obey the driver or disrespect the bus driver
- Riding the bus after receiving "No Ride" penalty
- Any improper bus stop procedures, (e.g., not lining up, throwing objects, playing in the streets, damaging property at bus stop)
- Giving improper identification when requested by the bus driver
- Improper behavior
- Other

Transportation to and from school by the school bus is a privilege and not required by law. Minimum penalties, as listed below, shall be used as guidelines for infractions of established rules.

- 1<sup>st</sup> Referral** Warning or possible bus-riding suspension. Telephone call or letter to parent/guardian if there is a bus-riding suspension.
- 2<sup>nd</sup> Referral** Warning or possible bus-riding suspension. Telephone call or letter to parent/guardian if there is a bus-riding suspension.
- 3<sup>rd</sup> Referral** Mandatory five (5) day bus-riding suspension. Letter or telephone call to parent/guardian.
- 4<sup>th</sup> Referral** Mandatory ten (10) day bus-riding suspension. Letter and telephone call to parent/guardian. A conference with parent/guardian will be required with transportation supervisor, bus driver, and the school principal during the ten (10) day suspension period before the student can resume riding the bus.
- 5<sup>th</sup> Referral** Mandatory bus suspension for balance of school year. Letter and telephone call to parent/guardian.

## **IMMEDIATE SUSPENSION**

- Severe misbehavior
- Caused or attempted to cause, or threatened to cause physical injury to a bus driver
- Student's actions have become a safety hazard

**Authority of bus driver (Section 14263 California Administrative Code Title 5) states:**

- (a) Pupils transported in a school bus shall be under the authority of, and responsible directly to, the driver of the bus. The driver shall be held responsible for the orderly conduct of the pupils while they are on the bus or being escorted across a street, highway, or road. Continued disorderly conduct or persistent refusal to submit to the authority of the driver shall be sufficient reason for a pupil to be denied transportation. A bus driver shall not require any pupil to leave the bus en route between home and school or other destinations.



**Delano Union School District**  
**SCHOOL BUS CONDUCT REPORT**

SCHOOL \_\_\_\_\_ DATE \_\_\_\_\_ BUS #/RTE \_\_\_\_\_ / \_\_\_\_\_  
BUS CONDUCT REPORT # \_\_\_\_\_ BUS DRIVER (print) \_\_\_\_\_  
\_\_\_\_\_ is being referred to the school administration for the following reason:  
(Student's Name)

**TRANSPORTATION SAFETY**

- Putting any part of body out of bus window
- Any movement out of seats while bus is in motion
- Any type of damage or defacing of bus
- Bringing combustibles onto the bus
- Throwing any objects in, out of, or at the bus
- Eating, drinking, or chewing gum on bus
- Tampering with radio or bus controls
- Using other than the student's regularly designated bus stop
- Unauthorized opening, closing, or tampering of any kind, with the bus doors, emergency exits and windows
- Transporting live animals, reptiles or insects, on the school bus (Science specimens are to be encased in safe containers of plastic or cardboard, glass containers will not be allowed on the bus)

**DRIVER/RIDER SAFETY**

- Using profane language or obscene gestures
- Creating excessive noise that distracts bus driver
- Riding the bus after receiving "No Ride" penalty
- Failure to obey bus driver, or disrespect to the bus driver
- Abusive body contact in or when loading/unloading bus
- Giving improper identification when requested by bus driver
- Any improper bus stops procedures, (e.g., not lining up)
- OTHER IMPROPER BEHAVIOR: \_\_\_\_\_  
\_\_\_\_\_

\_\_\_\_\_  
(SCHOOL ADMINISTRATOR'S SIGNATURE)

\_\_\_\_\_  
(PARENT/GUARDIAN SIGNATURE)

\_\_\_\_\_  
(BUS DRIVER'S SIGNATURE)

**THIS NOTICE MUST BE SIGNED BY THE PARENT/GUARDIAN AND RETURNED TO THE SCHOOL OFFICE.**

WHITE-M.O.T.

YELLOW-PRINCIPAL

PINK-DRIVER

GOLDENROD-STUDENT

# **NOTICE**

## **Safety Concerns and the Importance of Going Directly Home After School**

The Board of Trustees wishes to emphasize that parents should require their children to either proceed immediately and directly home upon leaving school grounds at the end of the school day, or to the location of their organized after school activity or caregiver. The school is not, and cannot be, responsible for the conduct and/or safety of pupils once they leave school grounds.

In particular, parents should discourage their children from “hanging out” at the parks or on the surrounding streets of the school grounds, or the nearby soda and ice cream stops. These locations have been the site of physical assaults by pupils who are determined on attacking their fellow pupils. Occasionally the assaults have been particularly violent. Additionally, accomplices have digitally recorded the attacks and posted the images on the internet.

In circumstances where the school has direct jurisdiction, perpetrators and their accomplices will be expelled or otherwise appropriately disciplined. When circumstances permit, all participants in misconduct will be disciplined, including those who digitally record, in any form (i.e., video camera, camera phone, etc.), the attack.

The school however, does not have the staff to patrol or otherwise supervise immediately adjacent streets and parks or nearby soda, ice cream, or sandwich stops during or after school hours. Consequently, parents cannot rely on the school to protect their child or supervise other children once they leave school grounds. The school’s responsibility for your child’s safety and the behavior of other children ends immediately when children leave school grounds. Streets and parks immediately adjacent to the school are not on school grounds.

Question or concerns regarding this notification should be directed to the respective school site principal.

# DELANO UNION SCHOOL DISTRICT

## DRESS CODE GUIDELINES

(K – 8<sup>th</sup>)

### **These guidelines are designed to ensure pupil learning and safety**

1. Pupils must adhere to uniform policies if a school implements such policy.
2. All clothing shall be *safe and hygienic* and shall not be *disruptive* to the school learning environment. Clothing shall cover undergarments at all times.
3. *No clothing or accessories shall be permitted which reflects any gang affiliation.* Solid red or blue shirts, shoes, shoelaces, bandanas, including accessories such as belts or jewelry are not permitted. Three or more pupils wearing the same attire together are not allowed (see gang related behavior). Gang related insignias such as, but not limited to, roman numeral XIV, XIII, X14, X13, the words Sureños, Norteños, Norte, Sur, etc.
4. Skirts, shorts and dresses must be longer than the fingers when the arms are extended downward. Frayed shorts or pants are *permitted if no skin is showing above the permitted length.* *Ripped pants or pants with holes are not permitted but may be allowed on a temporary basis due to being the result of normal wear or use.*
5. See through blouses, halter tops, bare midriffs, or off the shoulder blouses are not permitted. No spaghetti straps. Tank tops or sleeveless shirt must be 3 fingers width and **may not** expose the undergarment area.
6. All students must tuck in their shirt if the bottom of the shirt is longer than the tip of their thumb, with the arms hanging naturally at their side.
7. *Tight-fitting* shorts and/or leggings shall only be worn under appropriate length shorts, skirts, or dresses which are at least fingertip length.
8. Clothing that allows excessive space between the clothing and the body is not permitted. No sagging or oversized pants. Pants must be worn at waist length in a manner which does not expose undergarments.
9. Articles of clothing, including belts and jewelry, **may not**: display profanity; display products or slogans which promote tobacco, alcohol, illegal drugs, or other products or activities that are illegal for school age children; display explicit references to sexual activities; or otherwise interfere with school work, create disorder, or disrupt the school learning environment.
10. Straps on overalls or similar clothing must be fastened at all times.
11. Appropriate closed-toe shoes must be worn by all pupils. Flip flops, open-toed shoes, shoes without heel straps, steel toe shoes, slippers, and sandals are not permitted for safety reasons (pupils **must** wear appropriate shoes for physical education class).
12. Earrings that create a hazard to pupil's safety (i.e. earrings that dangle from the ear or hoops) shall not be permitted.
13. Cosmetics to the face and hair and/or hairstyles that are gang-related or disruptive to the school learning environment are not permissible at school. Temporary hair coloring is permitted if authorized in advance for a specific school-sponsored event or activity.
14. Piercings of the body (eyebrows, nose, tongue, etc.) are not allowed. Nose studs may be permitted if there is no safety risk to the student. Any tattoos **must** be covered by appropriate clothing at all times.
15. Items confiscated from the pupils will only be returned to the parent or legal guardians.
16. Pajamas shall not be worn at school unless authorized in advance for a specific school-sponsored event or activity.



# Delano Union School District

## Conduct Policy

### 2020-2021

#### Signature Page – Please sign and return to your child’s teacher

I have read and I fully understand the Conduct Policy and the dress code guidelines and limitations.  
I have reviewed and discussed all rules and expectations with my child.

\_\_\_\_\_  
Pupil Name

\_\_\_\_\_  
Pupil Signature

\_\_\_\_\_  
Parent Name

\_\_\_\_\_  
Parent Signature

\_\_\_\_\_  
School

\_\_\_\_\_  
Grade

\_\_\_\_\_  
Principal’s Signature

\_\_\_\_\_  
Vice Principal’s Signature



**DELANO UNION ELEMENTARY SCHOOL DISTRICT**

*Empowering Students to Succeed*